



# Waste Treatment Plant Project



## 2016 WTP Nuclear Supply Chain Collaboration Event



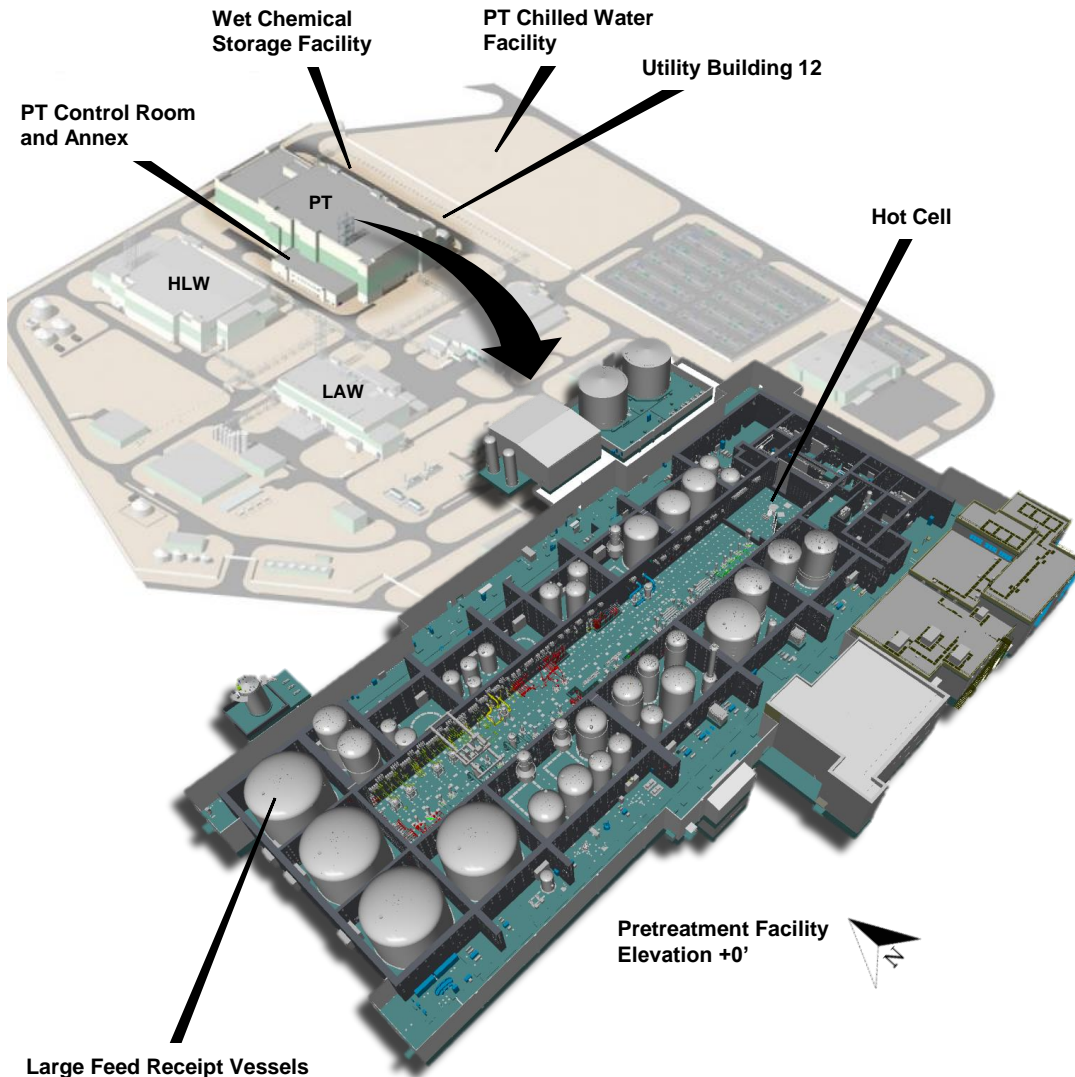
*Felice Presti*

**Pretreatment Facility Area Project Manager**

September 20, 2016



# Pretreatment Facility Overview



## Facility Overview

- 215' (w) x 540' (l) x 120' (h)
- Treat Tank Farm Waste (56M gal.)
- Process Two Waste Streams:
  - High Level Waste
  - Low Level Waste
- Key Processes:
  - Radionuclide Removal
  - Solids Separation
  - Reduce Water Content

## Key Quantities



**Concrete**  
114K CY



**HVAC**  
1.8M LB



**Steel**  
17K TN



**Conduit**  
524K LF



**Pipe**  
540K LF



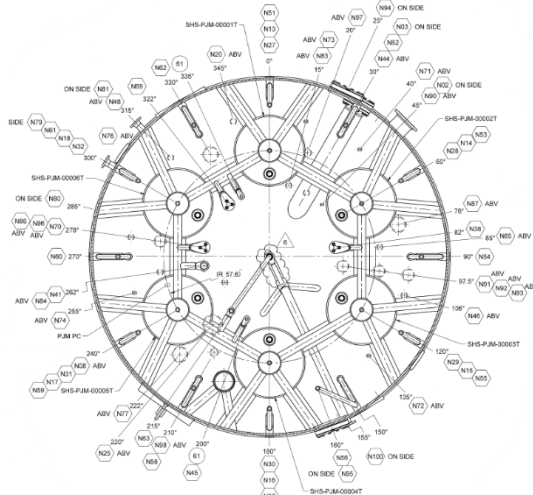
**Cable / Wire**  
1.5M LF

*“World’s largest radioactive chemical separations facility”*

# Why is the Pretreatment Facility Important?

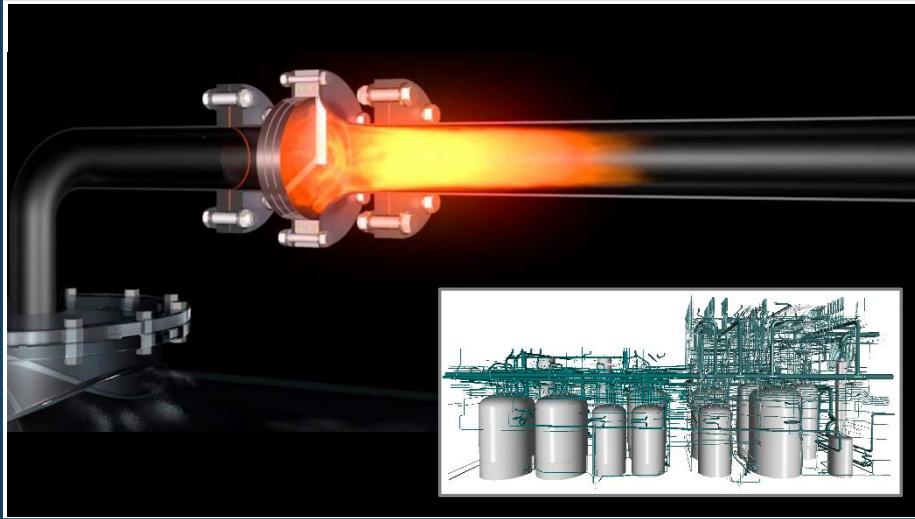
All work suspended in 2012 ...why?



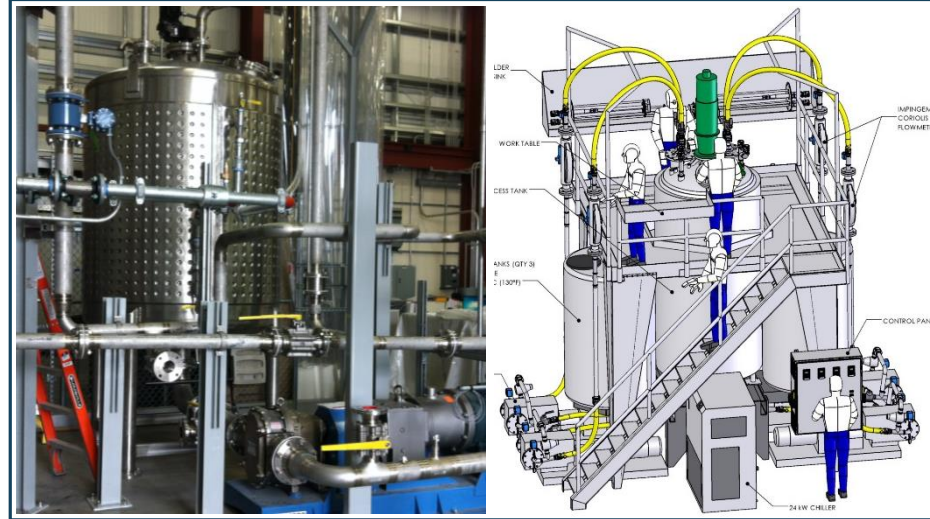


# Technical Decisions (continued)

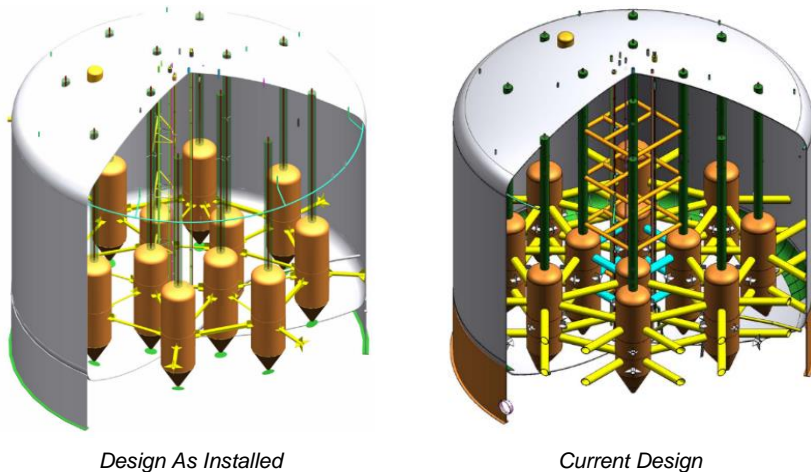
## Hydrogen in Piping and Ancillary Vessels



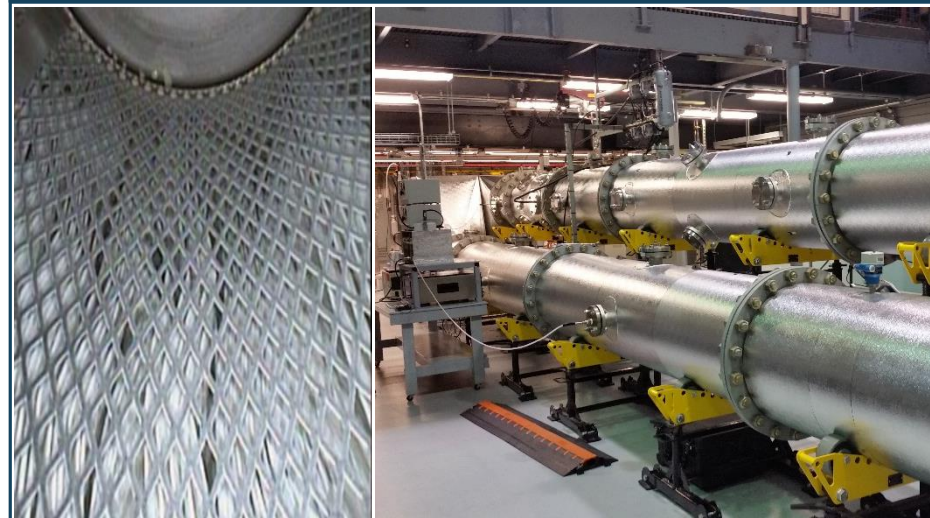
## Erosion / Corrosion



## Vessel Structural Integrity



## Facility Ventilation



What next?



# Major Procurements To Go

Communication System

Valves

Remote Operated Dampers

Safe Change Filter Housings

Vessels

Jumpers

Instrumentation

Auto Samplers

Remote Change Filter Housings

Racks and Frames

Pipe

Ion Exchange Columns